



Wardiere Inc.

MORGAN & CO. SHIPPING



Contents



Containers



Payment Policies

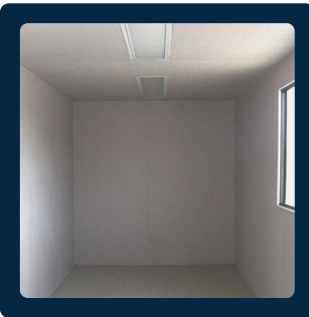


Shipping Policies



Our Oblifations

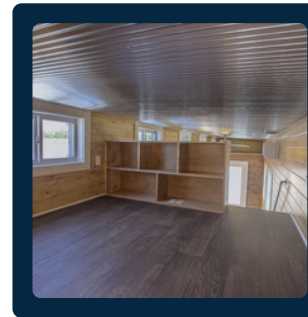
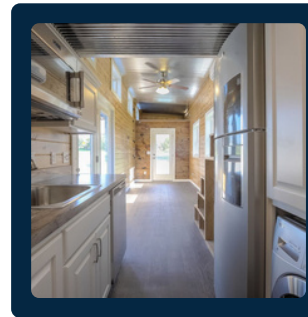
R30,000



6m open-side container

External Length - 6.06 m (20 ft)
External Width - 2.44 m
External Height - 2.59 m
Internal Length - 5.90 m
Internal Width - 2.35 m
Internal Height - 2.39 m
Door Width - 2.34 m
Door Height - 2.28 m
Max Gross Weight - 30,480 kg
Tare Weight - ~2,200–2,400 kg
Max Payload - ~28,000 kg
Volume Capacity - ~33.1 m³
Material - Corten Steel (weather-
New / Cargo-worthy / Wind &
Watertight

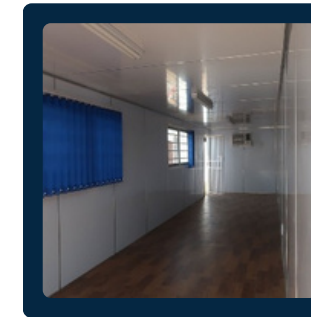
R204,620



12m 2 bedroom container

External Length - 12.19 m (40 ft)
External Width - 2.44 m
External Height - 2.59 m
(Standard) or 2.90 m (High Cube)
Layout - 2 Bedrooms, Open-Plan
Lounge/Kitchen, 1 Bathroom
Structure - Modified ISO dry
container
Insulation - High-density
polyurethane or Rockwool wall
insulation
Interior Finishes - Painted MDF or
PVC panels
Flooring - Vinyl, laminate, or tiled
flooring
Doors - Aluminium sliding/glass

R38,800



6m office-space container

External Length - 6.06 m (20 ft)
External Width - 2.44 m
External Height - 2.59 m
Structure - Converted ISO dry
container
Insulation - Polyurethane /
Rockwool insulation panels
Interior Walls - PVC cladding /
MDF / Painted board
Flooring - Vinyl, laminate, or
marine plywood
Doors - Steel security door or
aluminium-glass door
Windows - Sliding or fixed t or
extractor fans



Add a subheading

External Length - 6.06 m (20 ft)

External Width - 2.44 m

External Height - 2.59 m

Internal Length - 5.90 m

Internal Width - 2.35 m

Internal Height - 2.39 m

Door Width - 2.34 m

Door Height - 2.28 m

Max Gross Weight - 30,480 kg

Tare Weight - ~2,200–2,400 kg

Max Payload - ~28,000 kg

Volume Capacity - ~33.1 m³

Material - Corten Steel (weather-

New / Cargo-worthy / Wind & Watertight



12m High-Cube container

External Length - 12.19 m (40 ft)

External Width - 2.44 m

External Height - 2.90 m (9 ft 6 in)

Internal Length - 12.03 m

Internal Width - 2.35 m

Internal Height - 2.70 m

Door Width - 2.34 m

Door Height - 2.58 m

Max Gross Weight - 30,480 kg

Tare Weight - ~3,800 kg

Max Payload - ~26,680 kg

Volume Capacity - ~76.4 m³

Material - Corten steel

Flooring - Marine-grade plywood or bamboo

Ventilation - 4 vents standard



12m High-Cube container

External Length - 12.19 m (40 ft)

External Width - 2.44 m

External Height - 2.90 m (9 ft 6 in)

Internal Length - 12.03 m

Internal Width - 2.35 m

Internal Height - 2.70 m

Door Width - 2.34 m

Door Height - 2.58 m

Max Gross Weight - 30,480 kg

Tare Weight - ~3,800 kg

Max Payload - ~26,680 kg

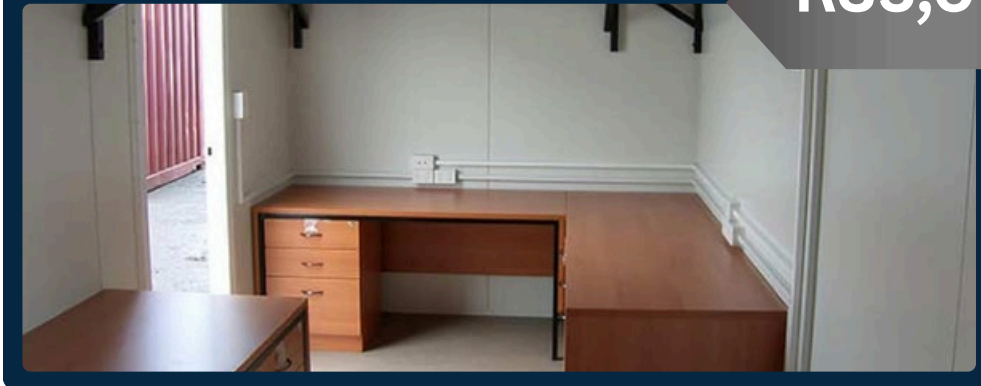
Volume Capacity - ~76.4 m³

Material - Corten steel

Flooring - Marine-grade plywood or bamboo

Ventilation - 4 vents standard

R35,000



6m office-space container

External Length - 6.06 m (20 ft)

External Width - 2.44 m

External Height - 2.59 m

Structure - Converted ISO dry container

Insulation - Polyurethane /
Rockwool insulation panels
Interior Walls - PVC cladding /
MDF / Painted board

Flooring - Vinyl, laminate, or
marine plywood

Doors - Steel security door or
aluminium-glass door

Windows - Sliding or fixed t or
extractor fans

R32,000



6m office-space container

External Length - 6.06 m (20 ft)

External Width - 2.44 m

External Height - 2.59 m

Structure - Converted ISO dry container

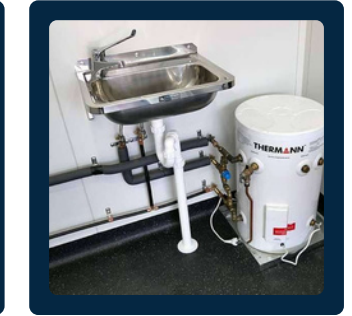
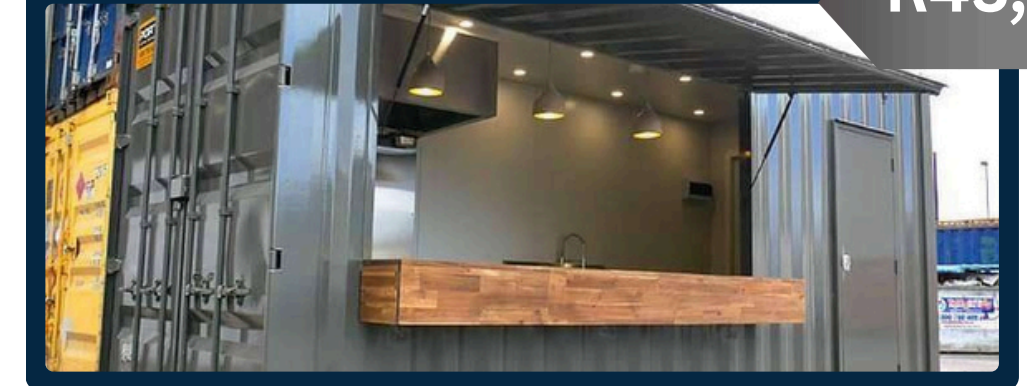
Insulation - Polyurethane /
Rockwool insulation panels
Interior Walls - PVC cladding /
MDF / Painted board

Flooring - Vinyl, laminate, or
marine plywood

Doors - Steel security door or
aluminium-glass door

Windows - Sliding or fixed t or
extractor fans

R45,000



6m kitchen container

External Length - 6.06 m (20 ft)

External Width - 2.44 m

External Height - 2.59 m

Structure - Modified ISO dry container

Interior Cladding - Stainless steel or PVC food-grade panels

Flooring - Non-slip aluminium or vinyl hygienic flooring

Windows & Serving Hatch - Sliding serving hatch with lockable
shutter

Cooking Equipment - Custom fit (gas stove, fryers, ovens –
client-defined)

Storage - Stainless steel shelves & cupboards

Work Surfaces - Stainless steel counters

Water Supply - Hot & cold system with sink & tap

Plumbing - Grey water outlet, water tank compatibility

Electrical Setup - DB board, plug points, ceiling lighting,
extractor fan

Ventilation - Commercial-grade extractor hood + air vents

Gas Setup (Optional) - Gas cage, piping, safety shutoff valve

Applications - Events, food trucks, construction sites, pop-up
cafés

R34,000



6m Tuck-shop container

External Length - 6.06 m (20 ft)

External Width - 2.44 m

External Height - 2.59 m

Structure - Modified ISO dry container

Interior Cladding - Stainless steel or PVC food-grade panels

Flooring - Non-slip aluminium or vinyl hygienic flooring

Windows & Serving Hatch - Sliding serving hatch with lockable shutter

Cooking Equipment - Custom fit (gas stove, fryers, ovens – client-defined)

Storage - Stainless steel shelves & cupboards

Work Surfaces - Stainless steel counters

Water Supply - Hot & cold system with sink & tap

Plumbing - Grey water outlet, water tank compatibility

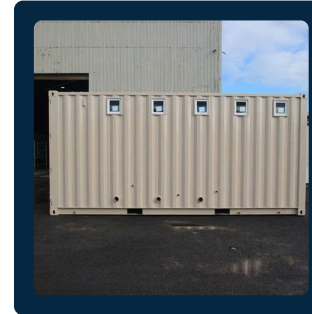
Electrical Setup - DB board, plug points, ceiling lighting, extractor fan

Ventilation - Commercial-grade extractor hood + air vents

Gas Setup (Optional) - Gas cage, piping, safety shutoff valve

Applications - Events, food trucks, construction sites, pop-up cafés

R30,000



6m Ablution container

External Length - 6.06 m (20 ft)

External Width - 2.44 m

External Height - 2.59 m

Layout - 5 private toilet cubicles, 1 separate lockable storage room

Structure - Converted ISO dry container

Partitioning - Moisture-resistant partition walls

Toilets - 5 ceramic or chemical toilets (optional urinal add-ons)

Doors - 5 individual exterior or internal cubicle doors

Wash Basins - 1-2 ceramic basins with taps (inside or external)

Storage Room - Small lockable area for cleaning supplies or consumables

Flooring - Non-slip vinyl or waterproof resin flooring

Ventilation - Air vents or small extractor fans per cubicle

Lighting & Electrical - LED ceiling lights, plug points (if needed)

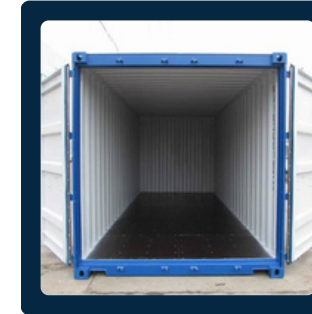
Plumbing - Inlet/outlet ready for sewerage and water supply

Water Supply - Tank-compatible or direct connection

Drainage - Built-in greywater and waste outlet piping

Usage - Construction sites, schools, public events, mining camps

R30.000



6m Storage container

External Length - 6.06 m (20 ft)

External Width - 2.44 m

External Height - 2.59 m

Internal Length - 5.90 m

Internal Width - 2.35 m

Internal Height - 2.39 m

Door Width - 2.34 m

Door Height - 2.28 m

Max Gross Weight - 30,480 kg

Tare Weight - ~2,200–2,400 kg

Max Payload - ~28,000 kg

Volume Capacity - ~33.1 m³

Material - Corten Steel (weather-
New / Cargo-worthy / Wind &
Watertight

R30,000



6m Ablution container

External Length - 6.06 m (20 ft)

External Width - 2.44 m

External Height - 2.59 m

Internal Length - 5.90 m

Internal Width - 2.35 m

Internal Height - 2.39 m

Door Width - 2.34 m

Door Height - 2.28 m

Max Gross Weight - 30,480 kg

Tare Weight - ~2,200–2,400 kg

Max Payload - ~28,000 kg

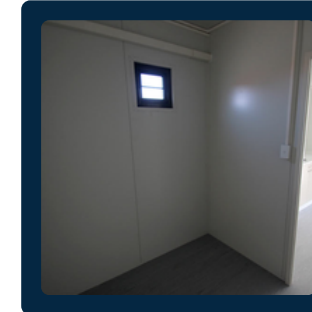
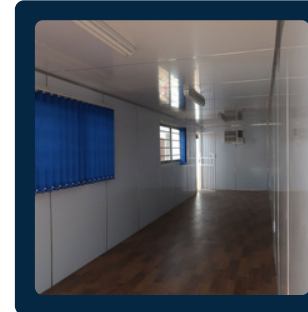
Volume Capacity - ~33.1 m³

Material - Corten Steel (weather-

New / Cargo-worthy / Wind &

Watertight

R35,000



12m Office container

External Length - 12.19 m (40 ft)

External Width - 2.44 m

External Height - 2.59 m (Standard) or 2.90 m (High Cube – optional)

Interior Layout - Open-plan or split office design (customizable)

Structure - Converted ISO dry container

Insulation - Rockwool or polyurethane wall insulation

Interior Finish - PVC panels or gypsum boards with painted finish

Flooring - inyl, laminate, or commercial carpet tiles

Windows - Aluminium windows with burglar bars (optional)

Doors - Steel security door or aluminium/glass entry door

Electrical Setup - DB board, plug points, ceiling-mounted LED lighting

Networking (Optional)- Ethernet ports, router shelves, trunking for cable mgmt

Air Conditioning - Optional wall-mounted or split unit A/C

Furniture (Optional) - Desks, chairs, filing cabinets, boardroom tables, etc.

Usage - Site management, corporate satellite offices, remote HQs

Transport - Crane-liftable, forklift pockets for easy relocation

R32,000



6m Ablution container

External Length - 6.06 m (20 ft)

External Width - 2.44 m

External Height - 2.59 m

Structure - Modified ISO dry container

Interior Cladding - Stainless steel or PVC food-grade panels

Flooring - Non-slip aluminium or vinyl hygienic flooring

Windows & Serving Hatch - Sliding serving hatch with lockable shutter

Cooking Equipment - Custom fit (gas stove, fryers, ovens – client-defined)

Storage - Stainless steel shelves & cupboards

Work Surfaces - Stainless steel counters

Water Supply - Hot & cold system with sink & tap

Plumbing - Grey water outlet, water tank compatibility

Electrical Setup - DB board, plug points, ceiling lighting, extractor fan

Ventilation - Commercial-grade extractor hood + air vents

Gas Setup (Optional) - Gas cage, piping, safety shutoff valve

Applications - Events, food trucks, construction sites, pop-up cafés

Shipping & Delivery Policy

1. Delivery Coverage

We offer nationwide and international delivery for:

- New and used shipping containers (standard and modified)
- Automotive engines and mechanical parts (bulk or individual units)
- Industrial equipment and supplies

2. Processing & Lead Times

- Containers (Standard Units): 2–5 business days for dispatch.
- Custom Container Builds: 10–21 business days depending on complexity.
- Engines & Parts: 3–7 business days (pending stock availability and export paperwork).

3. Shipping Methods

- Land Freight: For local deliveries (flatbed truck, crane truck).
- Sea Freight: For international container shipping and engine exports.
- Air Freight: Optional for urgent engine or parts shipments (premium rates apply).

4. Packaging & Protection

- All containers are secured, sealed, and inspected prior to delivery.
- Engines and parts are crated or pallet-wrapped, oil-drained, and export-ready.
- Fragile components receive additional cushioning and weather-proofing.

5. Shipping Costs

Shipping fees are based on:

- Delivery distance
- Container or cargo size/weight
- Export documentation (if applicable)
-

6. Insurance & Liability

- We offer optional transit insurance for all international shipments.
- All items are inspected prior to shipment. We are not liable for damage once items are accepted by third-party freight companies unless insured through us.

7. Customs & Export Documentation

- All international shipments include the required paperwork:
 - Bill of Lading
 - Commercial Invoice
 - Packing List
 - Certificate of Origin (on request)
- Clients are responsible for clearing customs unless otherwise arranged.

8. Delivery Access

Please ensure the delivery site:

- Has proper space for container drop-off (level ground preferred)
- Is accessible by truck or crane (we'll advise based on your order)

Payment Policies

Accepted Payment Methods

- EFT / Bank Transfer (Preferred)
- Card Payments (Visa, MasterCard, Amex – online or POS)
- SWIFT International Transfers (for overseas clients)
- Cash (only for walk-in clients at designated branches)
-

Payment Terms

- Containers (Standard Units):
- 70% deposit to confirm order, 30% balance before dispatch
- Custom Containers / Modifications:
- 50% deposit on confirmation, 30% during build, 20% before delivery
- Automotive Parts & Engines:
- 100% payment upfront for available stock
- or
- 70% deposit for special imports/custom builds

Security & Verification

- All transactions are verified with proof of payment and order reference
- Invoices are issued immediately upon confirmation
- We do not release goods without confirmed cleared funds

Late Payments

- Orders not paid within 7 business days may be cancelled unless otherwise arranged
- Production on custom units will pause if stage payments are delayed

Our Sales Team



Alpheus Hlabangwane

Sales &
Communication



Kyrie Petrakis

Marketing Specialist



Donna Stroupe

Business Analyst

Contact Us

Cruise Terminal, Duncan Rd, Victoria & Alfred
Waterfront, Cape Town, 8001
rsacontainers@gmail.com
sales@morganshippingfreight.org
TEL: 27 67 930 5784
FAX: 2778-946-5546

Mkomani, Cement Rd, Mombasa,
Kenya
info@pristinesolutionsgroup.net
rsales@morganshippingfreight.co.ke
TEL: +25455-645-0000

Harbour Rd, Tema, Ghana
sales@morganshippingfreight.gh
TEL: +23337-397-5464

